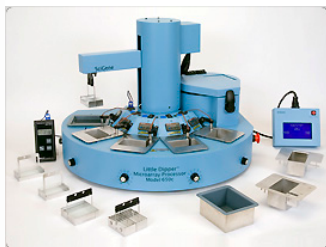


Little Dipper® Processor for FISH



Little Dipper Processor with accessories.

Automates processing of slides for FISH and karyotype analysis. Controls wash time, agitation, buffer temperatures and drying using an integrated centrifuge. Batches of 1 to 24 slides are processed using SciGene or user-defined protocols. Performs G-banding and pre and post-hybridization processing of FFPE, bone marrow and blood samples for FISH. Ready for use with Agilent, Illumina or Roche NimbleGen microarrays with additional accessories.

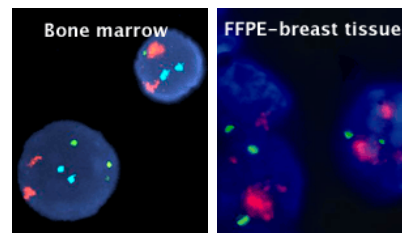
For Research Use Only

- Locks-in probe signals levels, day-to-day and run-to-run
- Produces clean slides with low, uniform backgrounds
- “Load and go” walk-away automation
- Use for both FISH and CMA tests
- Simple temperature validation for CLIA certification
- Compact design, fits in fume hood

PRODUCT	CATALOG #
Little Dipper Processor for FISH, 115V.	1080-70-1
Little Dipper Processor for FISH, 230V.	1080-70-2
ACCESSORIES	CATALOG #
Bath, Standard (670 ml).	1080-10-1
Bath, Low Volume, Non Heatable (210 ml).	1080-10-2
Bath, Low Volume, Heatable (275 ml).	1080-10-5
Bath Cover.	1080-12-0
Bath Cover Set.	1080-12-1
Slide Rack, 12-Position for standard 3 inch slides.	1080-20-1
Slide Rack, 24-Position for standard 3 inch slides.	1080-20-5
Absorbent Pads for 12-Position Rack Buckets.	1080-21-1
Absorbent Pads for 24-Position and Hybex Rack Buckets.	1080-21-0
Spacer for Rack Bucket, 2/pk. Fits Hybex and 24-Position racks.	1080-22-3
Spacer for Rack Bucket, 2/pk. Fits 12-Position racks.	1080-23-3
Digital Thermometer with NIST certificate.	1051-52-0
24 Slide Rack Kit. Includes two 24-position slide racks, centrifuge buckets (red/green), spacers and absorbent pads.* (*Requires standard baths (670 ml) for operation.	1080-25-0
Upgrade Kit for Illumina BeadChips. Includes 6x Low Volume, Non Heatable Baths and 2x 12-Position Slide Racks for 3.25 inch slides.	1080-31-0

SPECIFICATION	DESCRIPTION	
Baths and Racks Included	6x Bath, Low Volume, Non Heatable (210 ml) 2x Bath, Low Volume, Heatable (275 ml) 1x Bath, Standard (670 ml) 2x Slide Rack, 12-Position for standard 3” slides.	
Electrical Cat # 1080-70-1 Cat # 1080-70-2	115V AC, 50/60Hz, 1700 W 230V AC, 50/60 Hz; 1700 W	
Dimensions (HxWxD)	20 x 28 x 22 inches (51x 71 x 56 cm)	
Instrument Weight	47 lbs (21 kg) net	
Performance and Controls	Temperature Range Ambient +5° C to 95° C Temperature Regulation ± 0.5° C from set point Agitation Speed 0 to 600 relative units Agitation Stroke Length User selectable, standard (9.5 mm) or long (29.5 mm) Centrifuge RPM / Force 690 RPM / 50 g Protocol Storage Up to 14 protocols, 1 to 9 steps each	
PUB #	PUBLICATIONS	TYPE
504	Little Dipper User Manual	Manual
103	Pre-Hyb Processing of FFPE Samples for FISH	Method
120	Pre-Hyb Processing of Bone Marrow and Blood	Method
112	GTG Banding of Chromosomes	Method
121	Post-Hybridization Processing of Vysis Probes (1 to 12 slides)	Method
107	Post-Hybridization Processing of Vysis Probes (up to 24 slides)	Method
113	Bath Temperature Validation Methods for CLIA-Regulated Laboratories	Support Document
421	Little Dipper Periodic Cleaning and Maintenance	Support Document

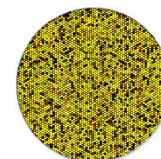
Multiple Uses



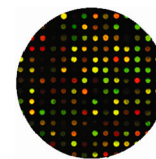
Karyotyping



CGH/CMA



Gene Expression



Microarray Platform-Compatible

